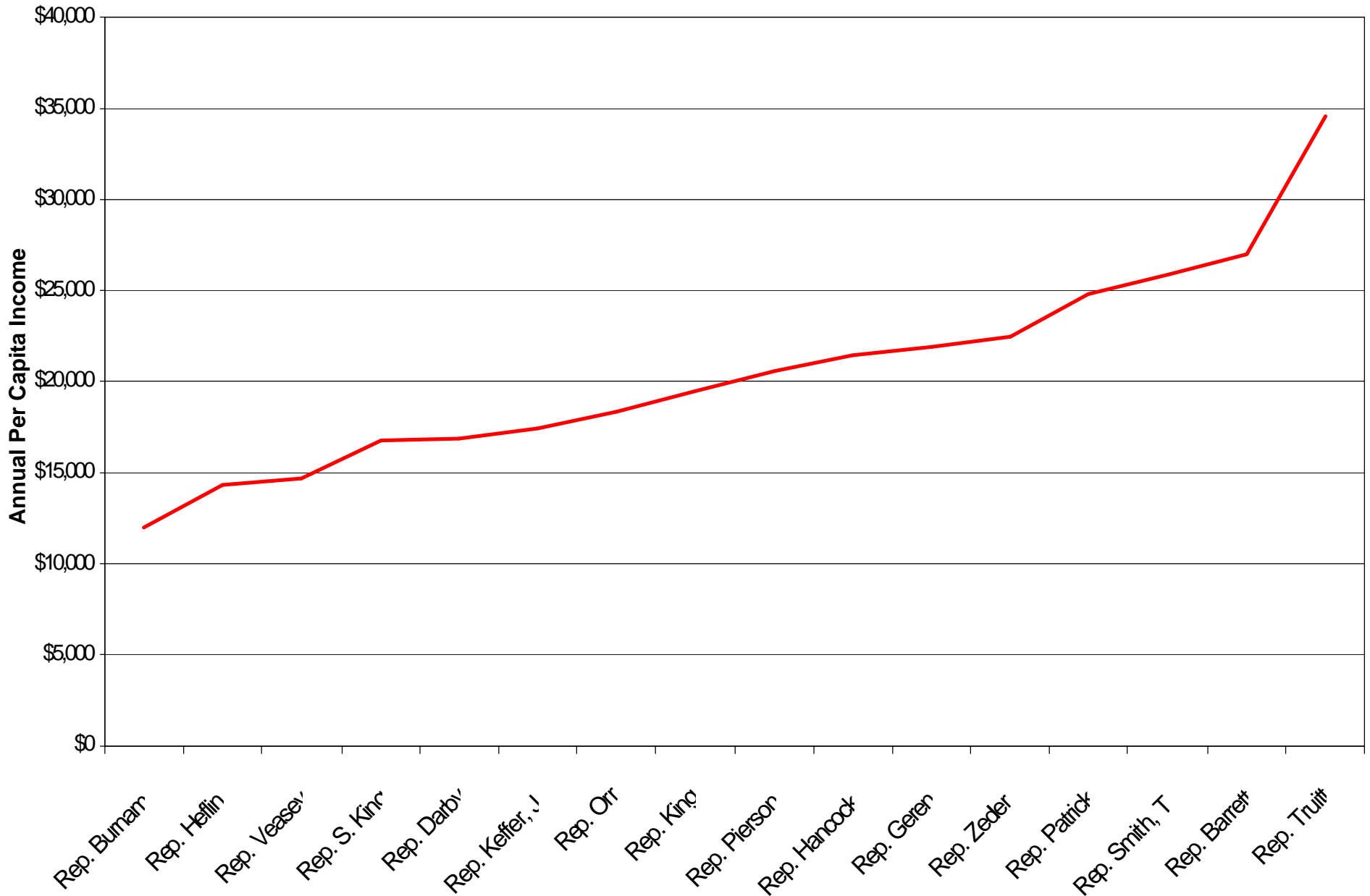
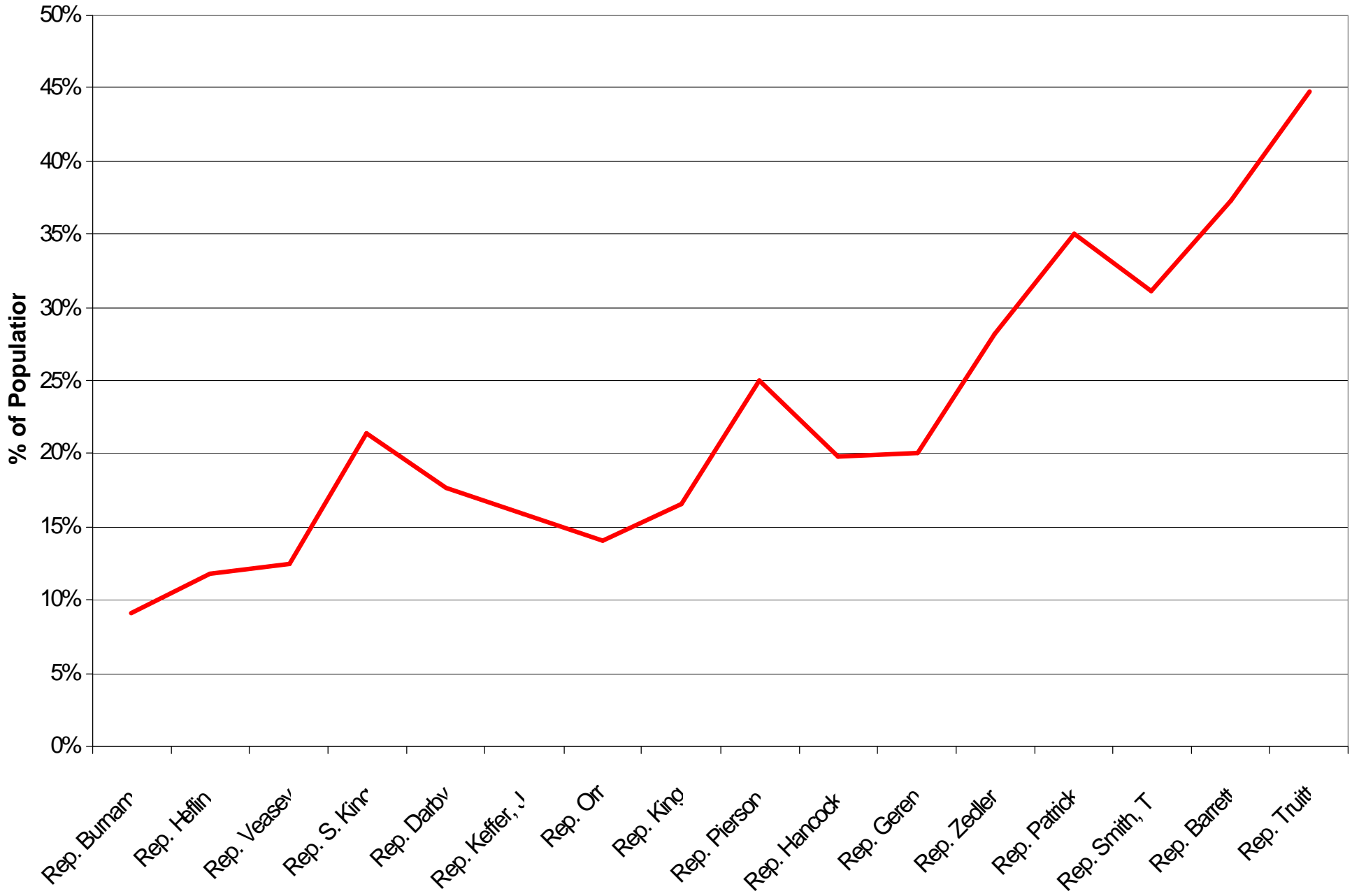


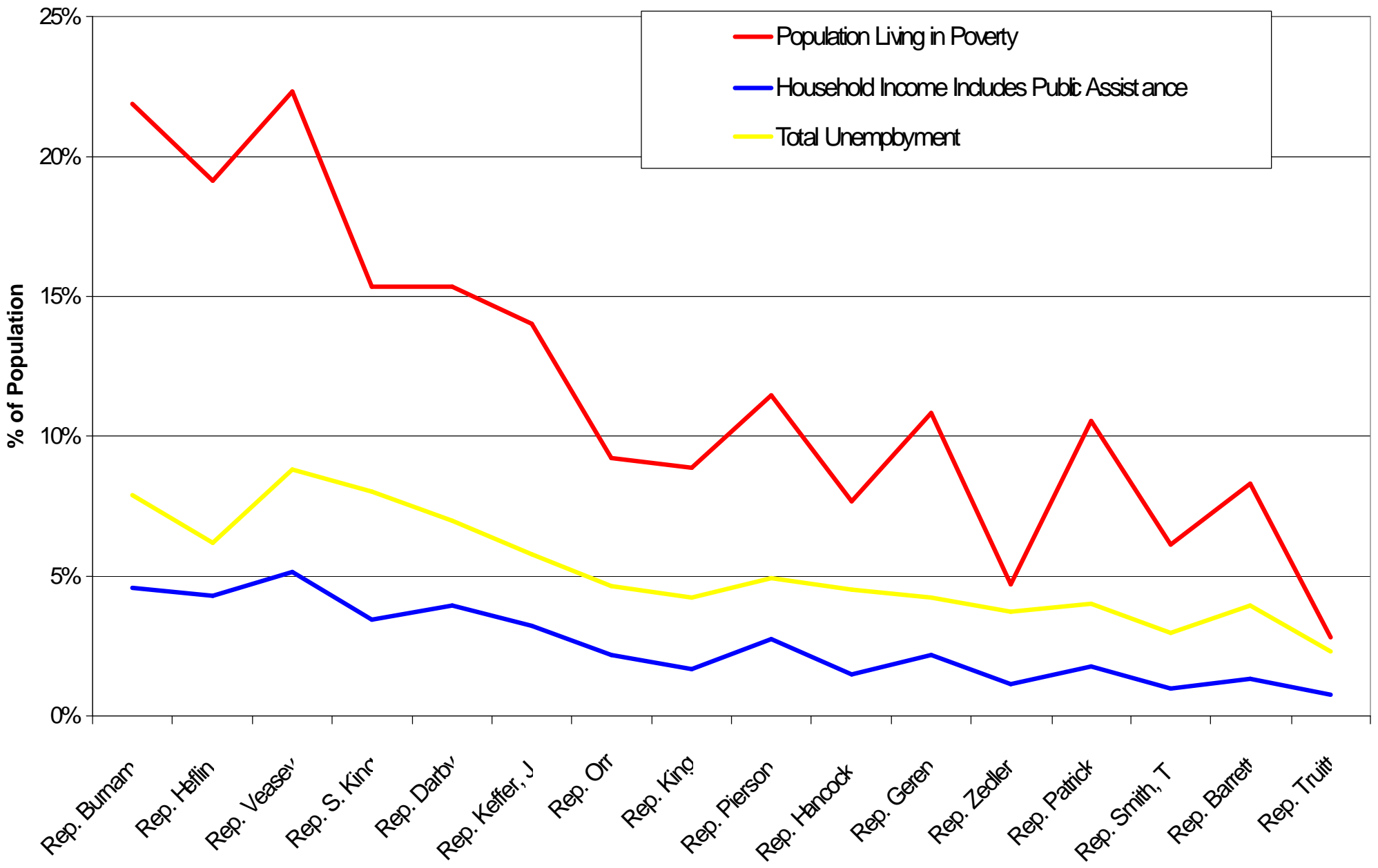
Annual Per Capita Income
San Angelo, Abilene & Ft. Worth Area Legislative House Districts
Source: U.S. Bureau of the Census, 2000



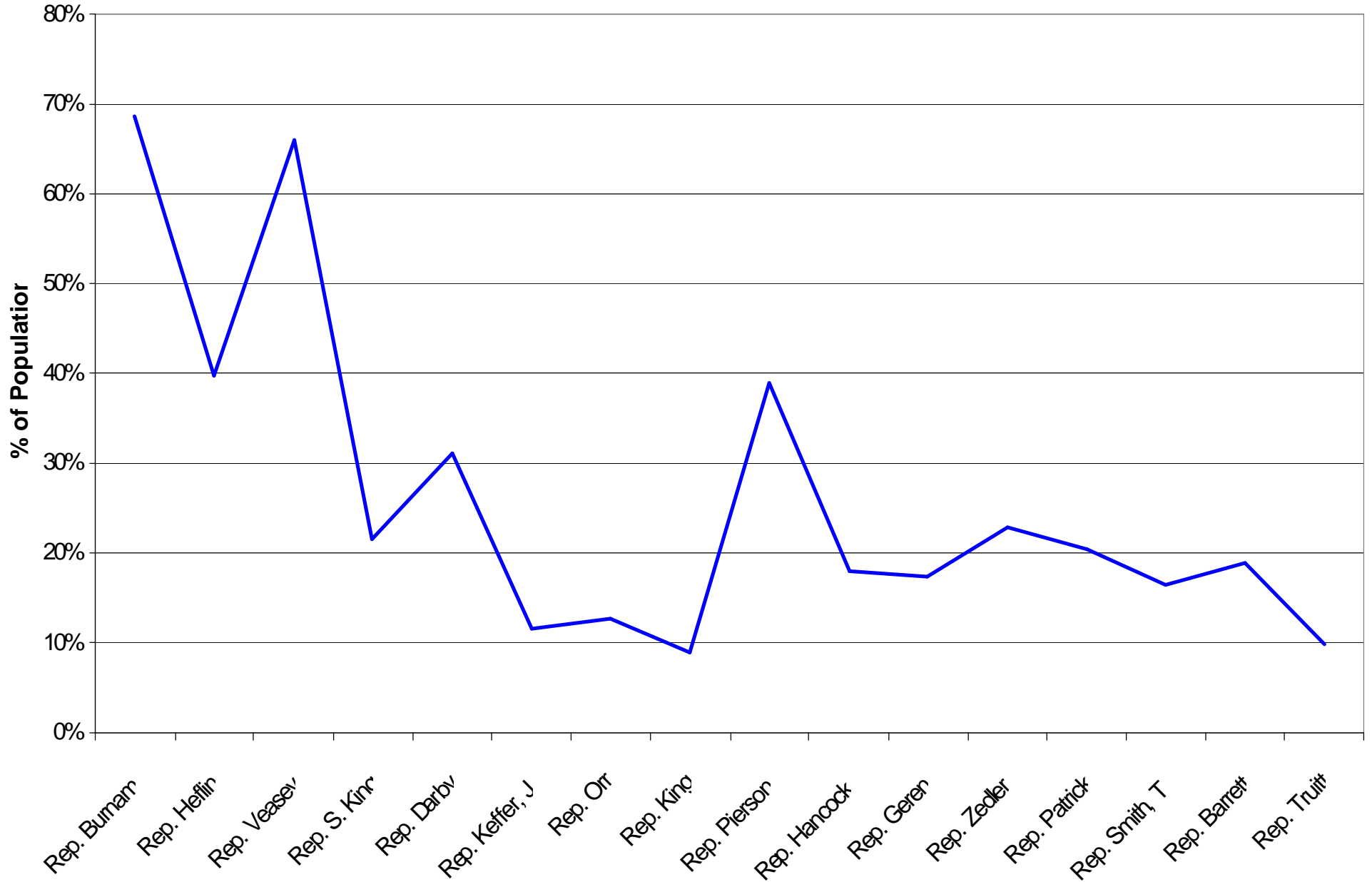
Bachelors Degree or Higher (Age 25+)
San Angelo, Abilene & Ft. Worth Area Legislative House Districts
Source: U.S. Bureau of the Census, 2000



Selected Labor (Age 16+) & Income Characteristics
San Angelo, Abilene & Ft. Worth Area Legislative House Districts
 Source: U.S. Bureau of the Census, 2000



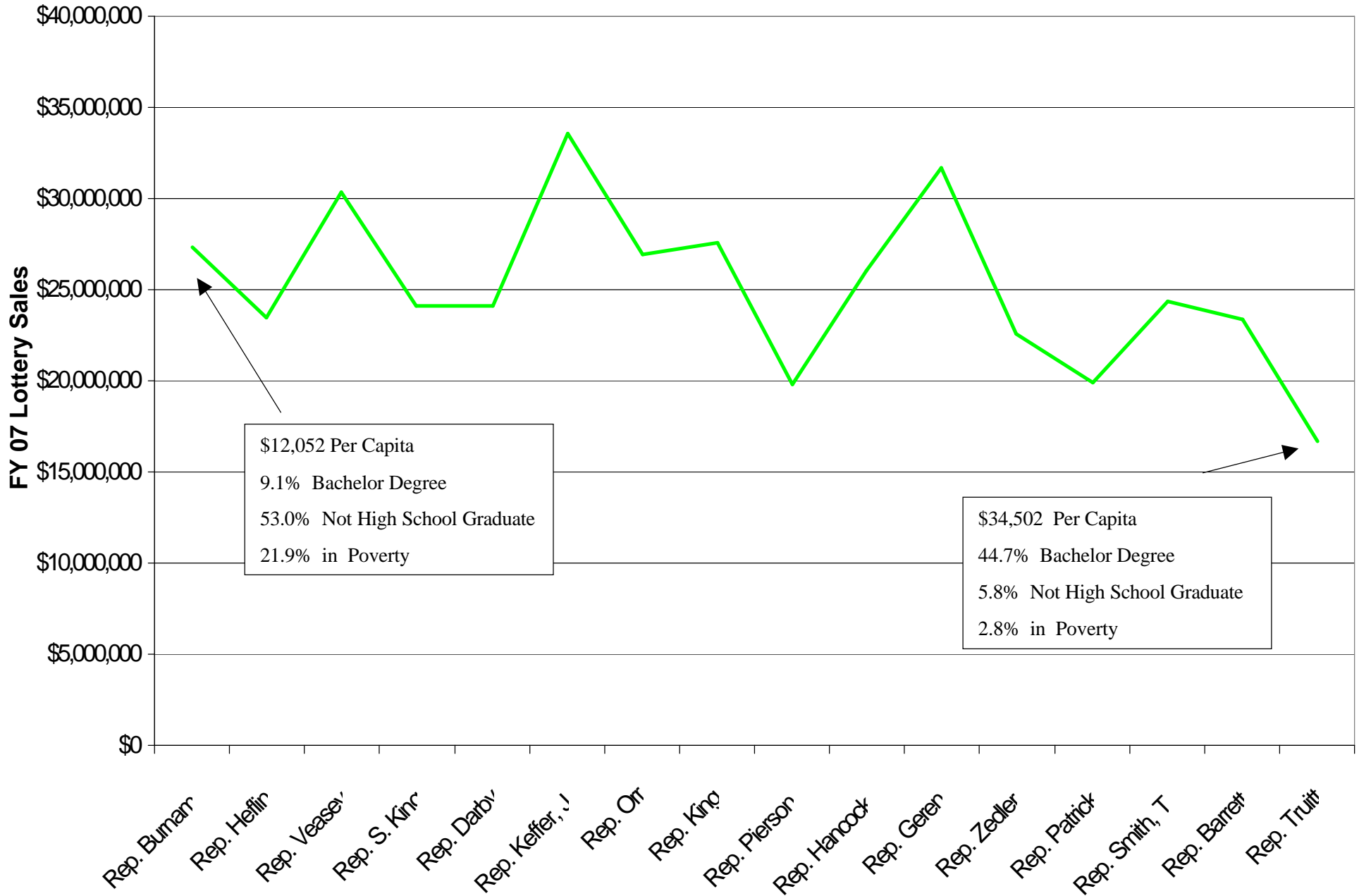
Black & Hispanic Voting Age Population
San Angelo, Abilene & Ft. Worth Area Legislative House Districts
Source: U.S. Bureau of the Census, 2000



FY07 Total Texas Lottery Sales

San Angelo, Abilene & Ft. Worth Area Legislative House Districts

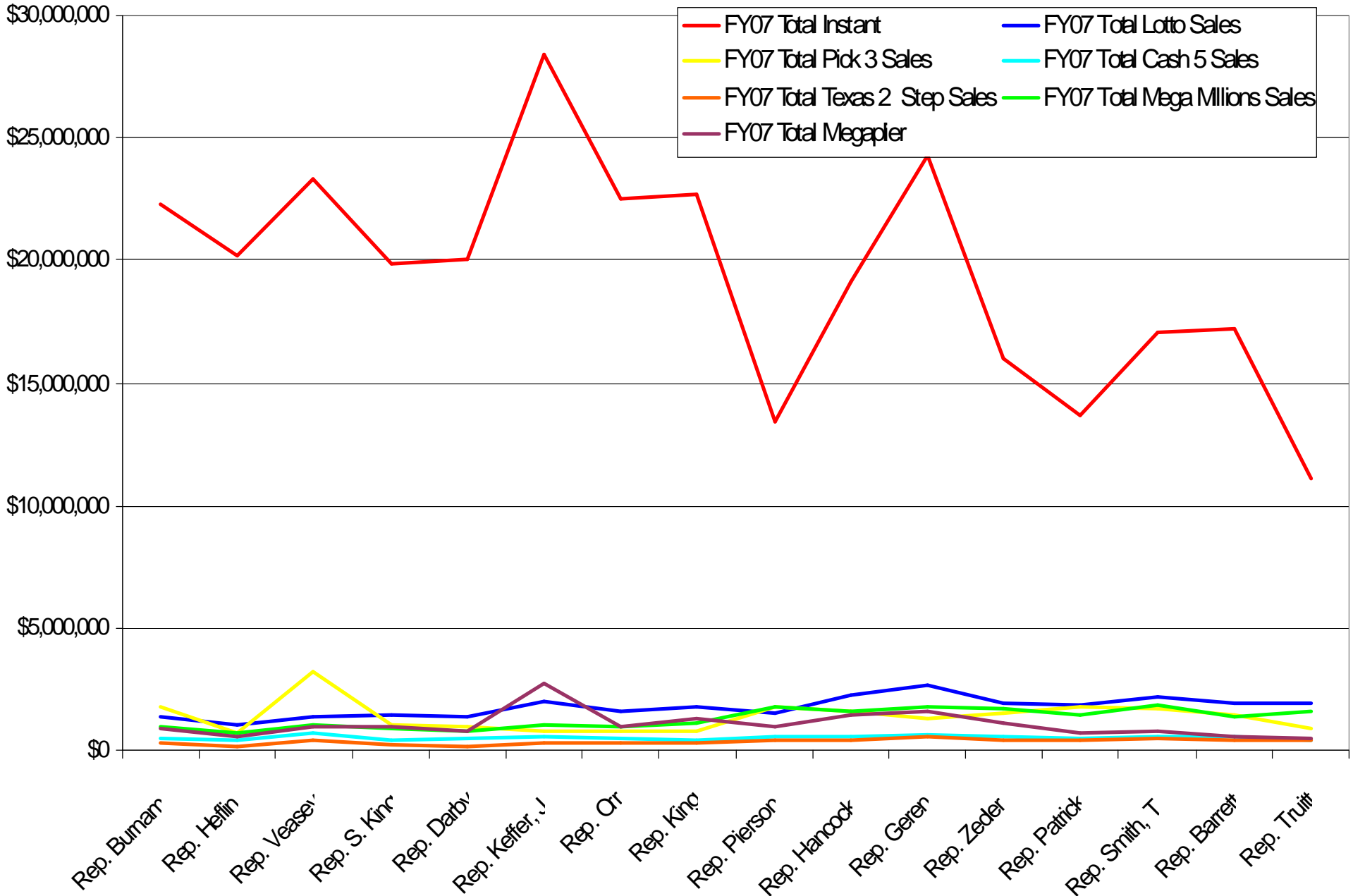
Source: Texas Lottery Commission FY07 Sales & Retailer Data (Actual Retailer Sales)



FY07 Texas Lottery Sales by Product

San Angelo, Abilene & Ft. Worth Area Legislative House Districts

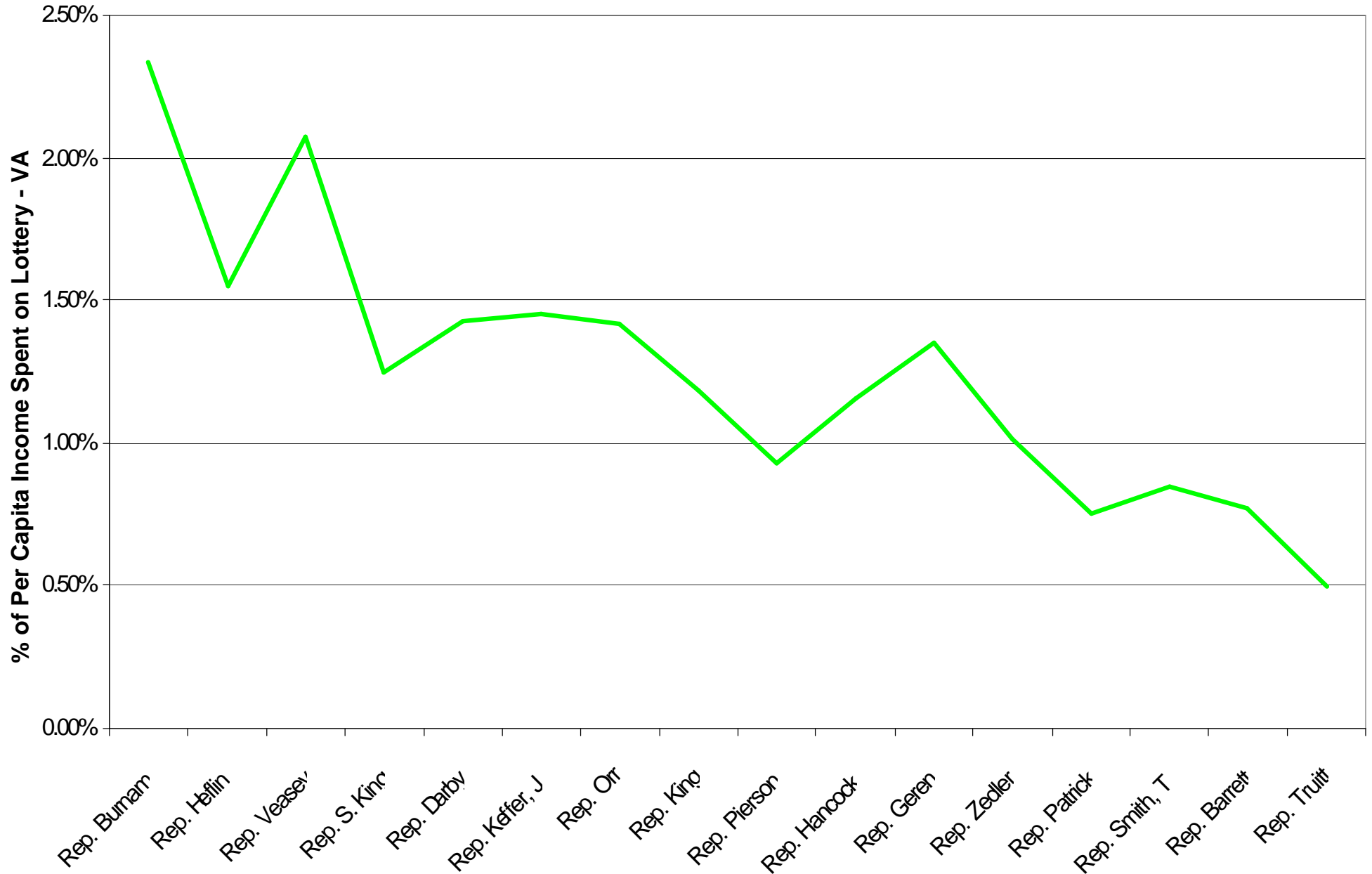
Source: Texas Lottery Commission FY07 Sales & Retailer Data (Actual Retailer Sales)



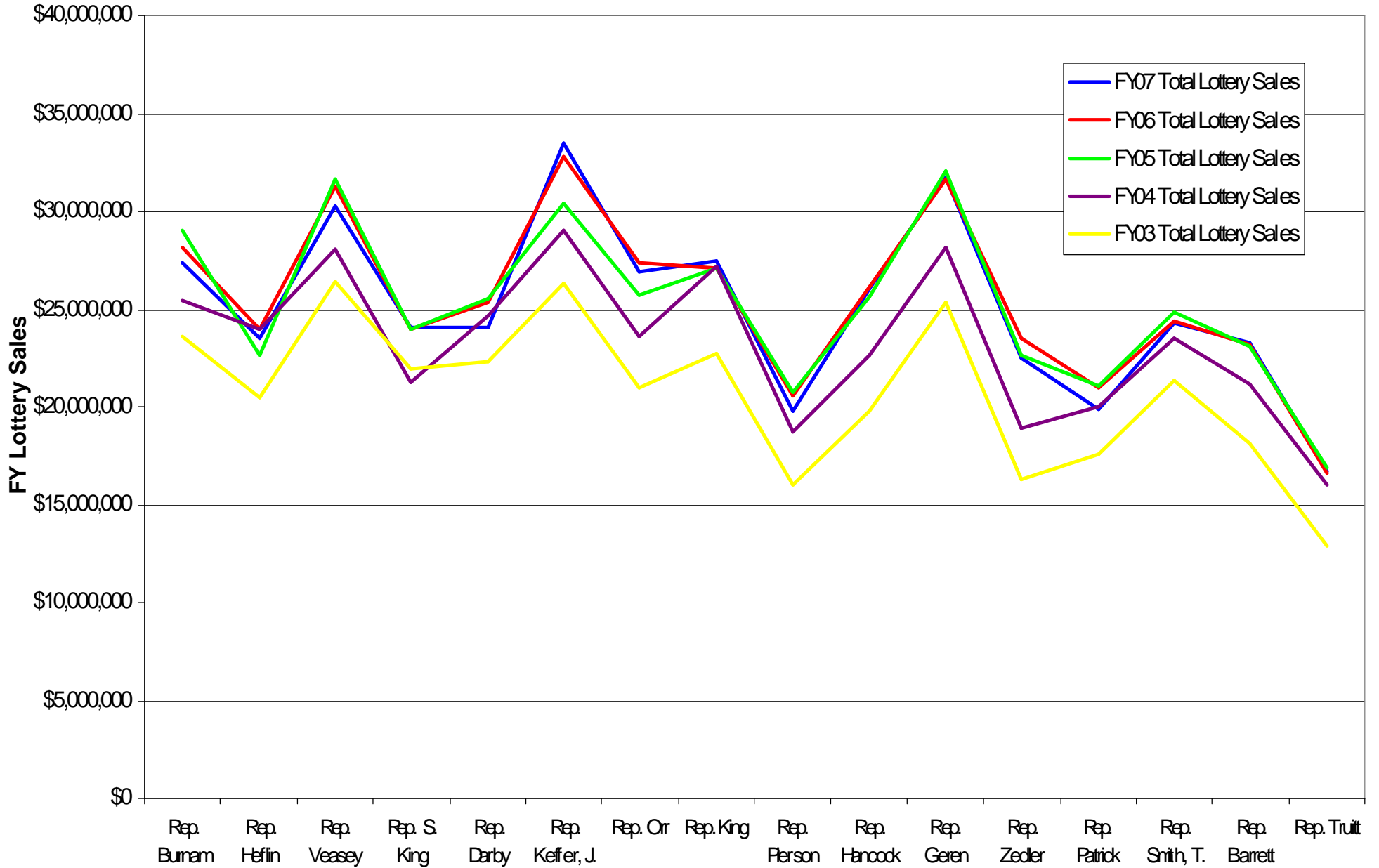
Percentage of Per Capita Income Spent on Lottery- Voting Age Population

San Angelo, Abilene & Ft. Worth Area Legislative House Districts

Source: Texas Lottery Commission FY07 Sales & Retailer Data & U.S. Bureau of the Census, 2000



FY03, FY04, FY05, FY06 & FY07 Total Texas Lottery Sales
San Angelo, Abilene & Ft. Worth Area Legislative House Districts
 Source: Texas Lottery Commission Lottery Sales & Retailer Data (Actual Retailer Sales)



FY 03- FY07 Percentage of Per Capita Income Spent on Lottery- Voting Age Population
 San Angelo, Abilene & Ft. Worth Area Legislative House Districts

Source: Texas Lottery Commission Sales (Actual Retailer Sales) & U.S. Bureau of the Census, 2000

