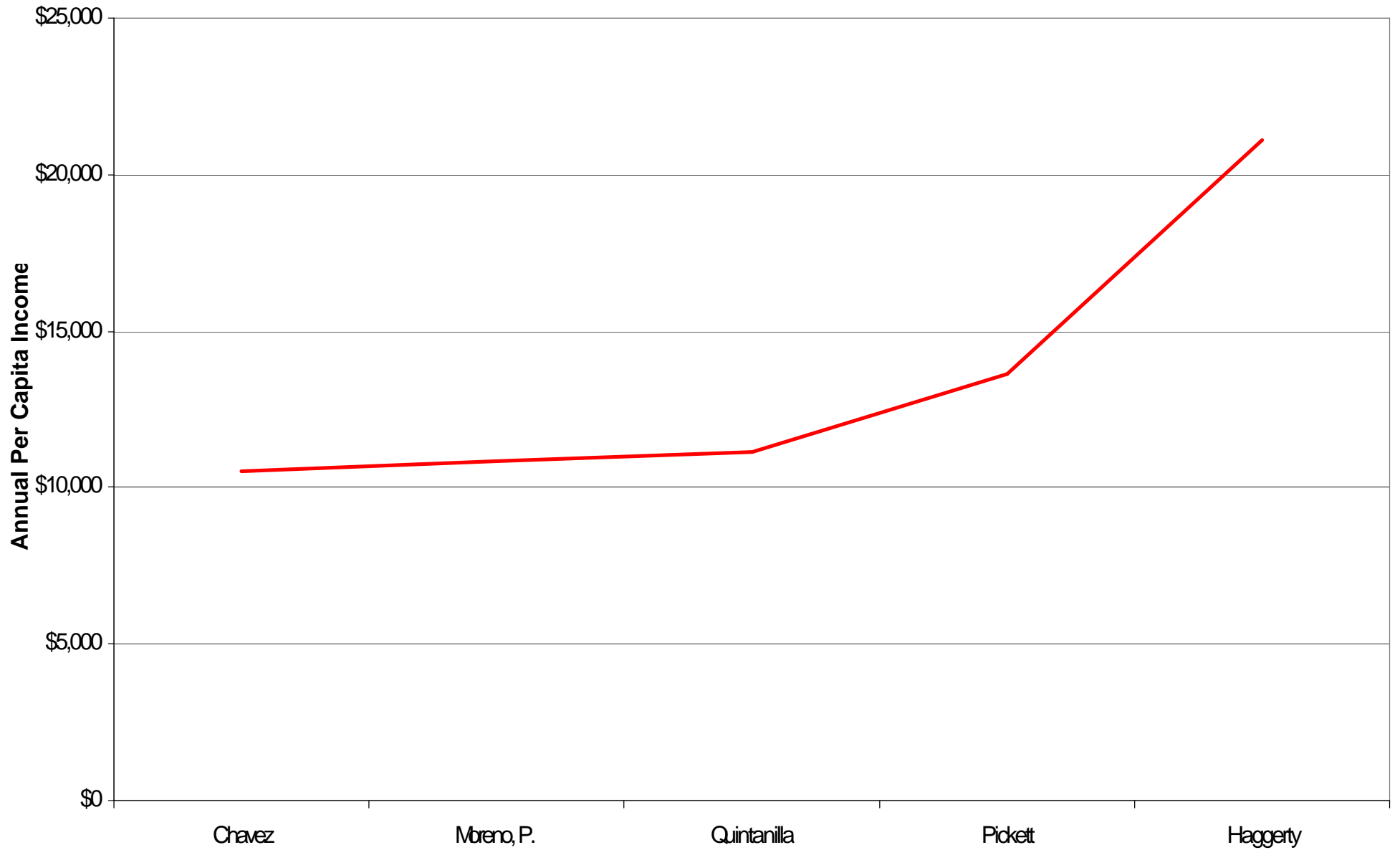


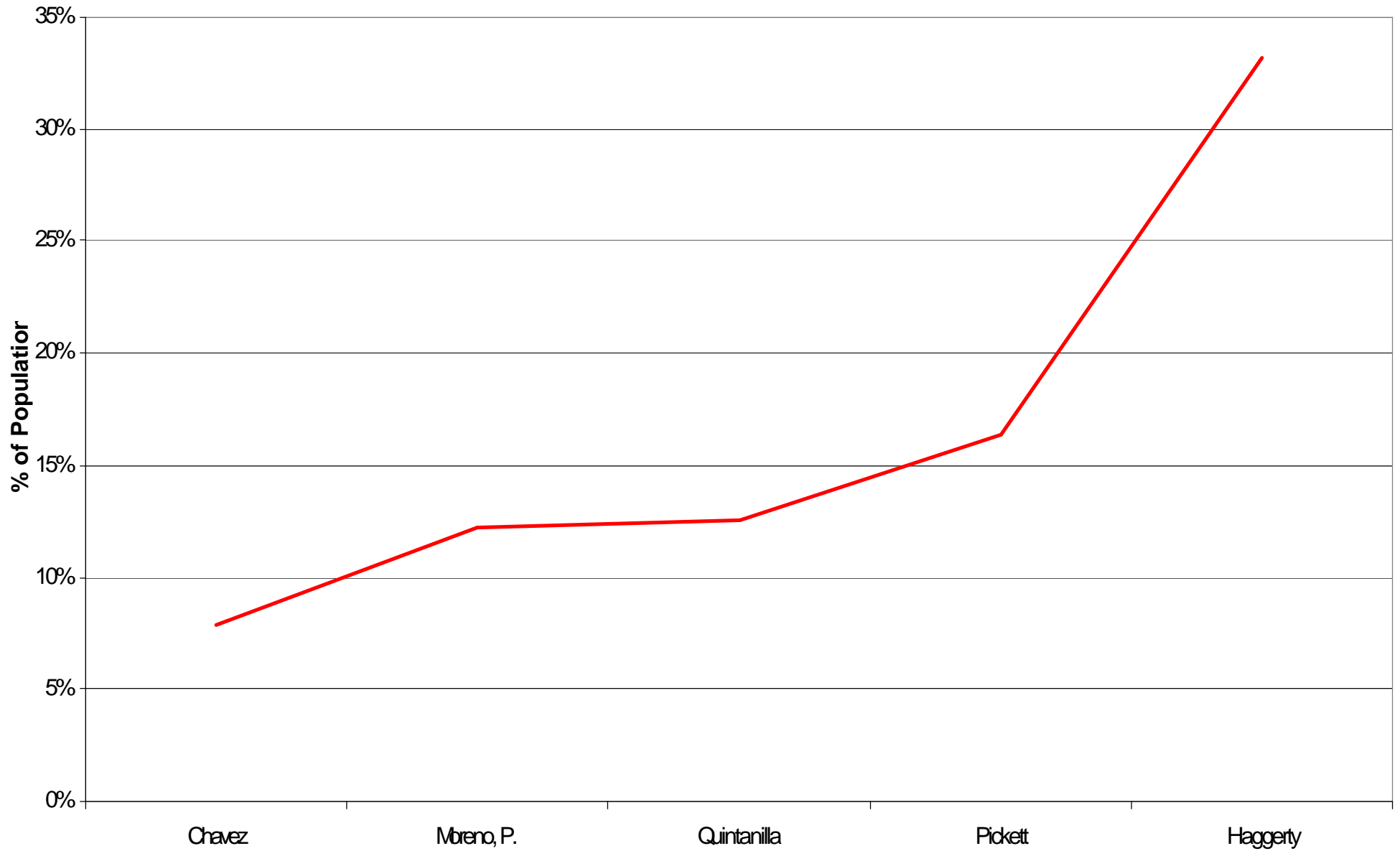
**Annual Per Capita Income**  
**El Paso Area Legislative House Districts**  
Source: U.S. Bureau of the Census, 2000



# Bachelors Degree or Higher (Age 25+)

El Paso Area Legislative House Districts

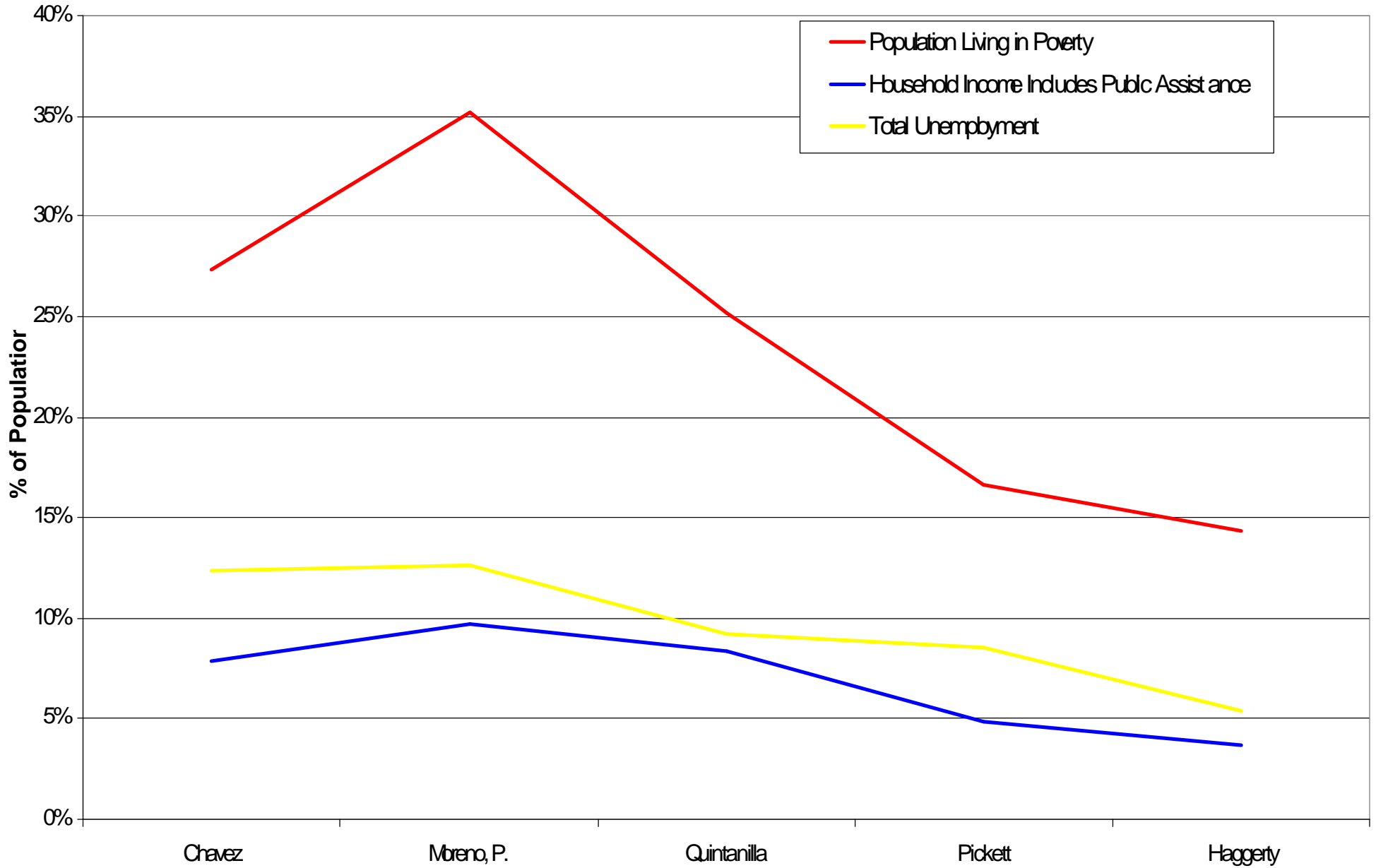
Source: US Bureau of the Census, 2000



# Selected Labor (Age 16+) & Income Characteristics

El Paso Area Legislative House Districts

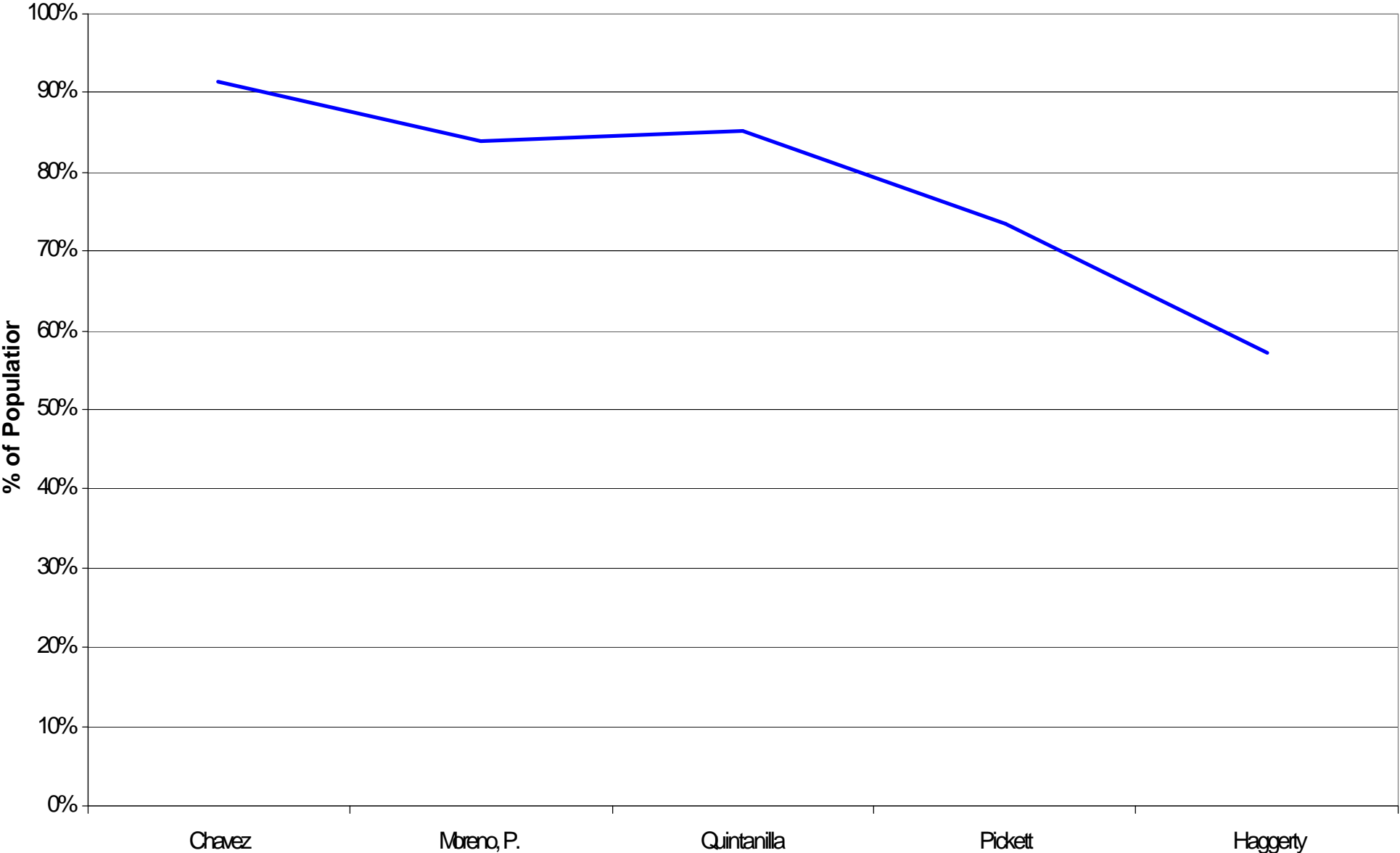
Source: US. Bureau of the Census, 2000



# Black & Hispanic Voting Age Population

## El Paso Area Legislative House Districts

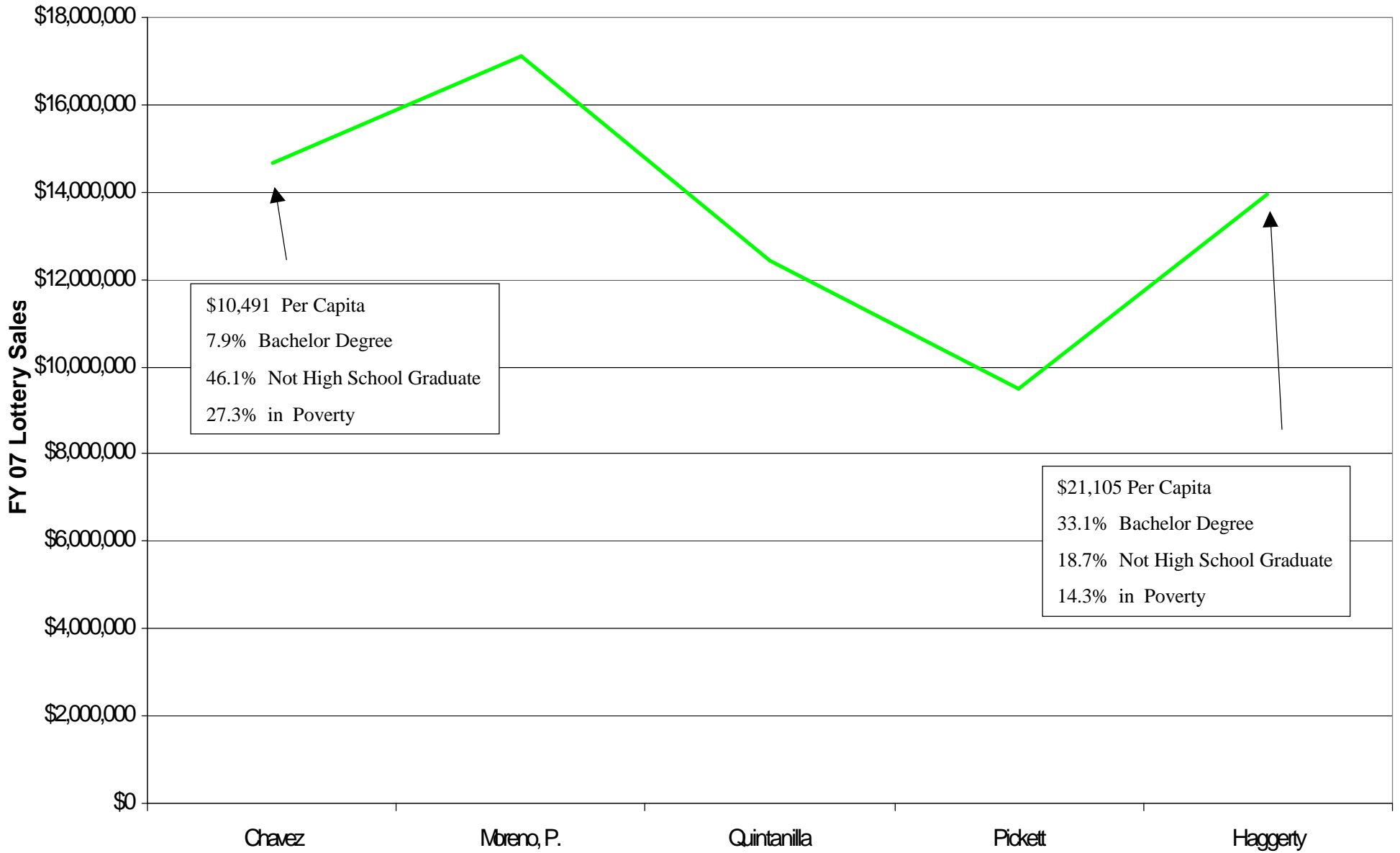
Source: U.S. Bureau of the Census, 2000



# FY07 Total Texas Lottery Sales

## El Paso Area Legislative House Districts

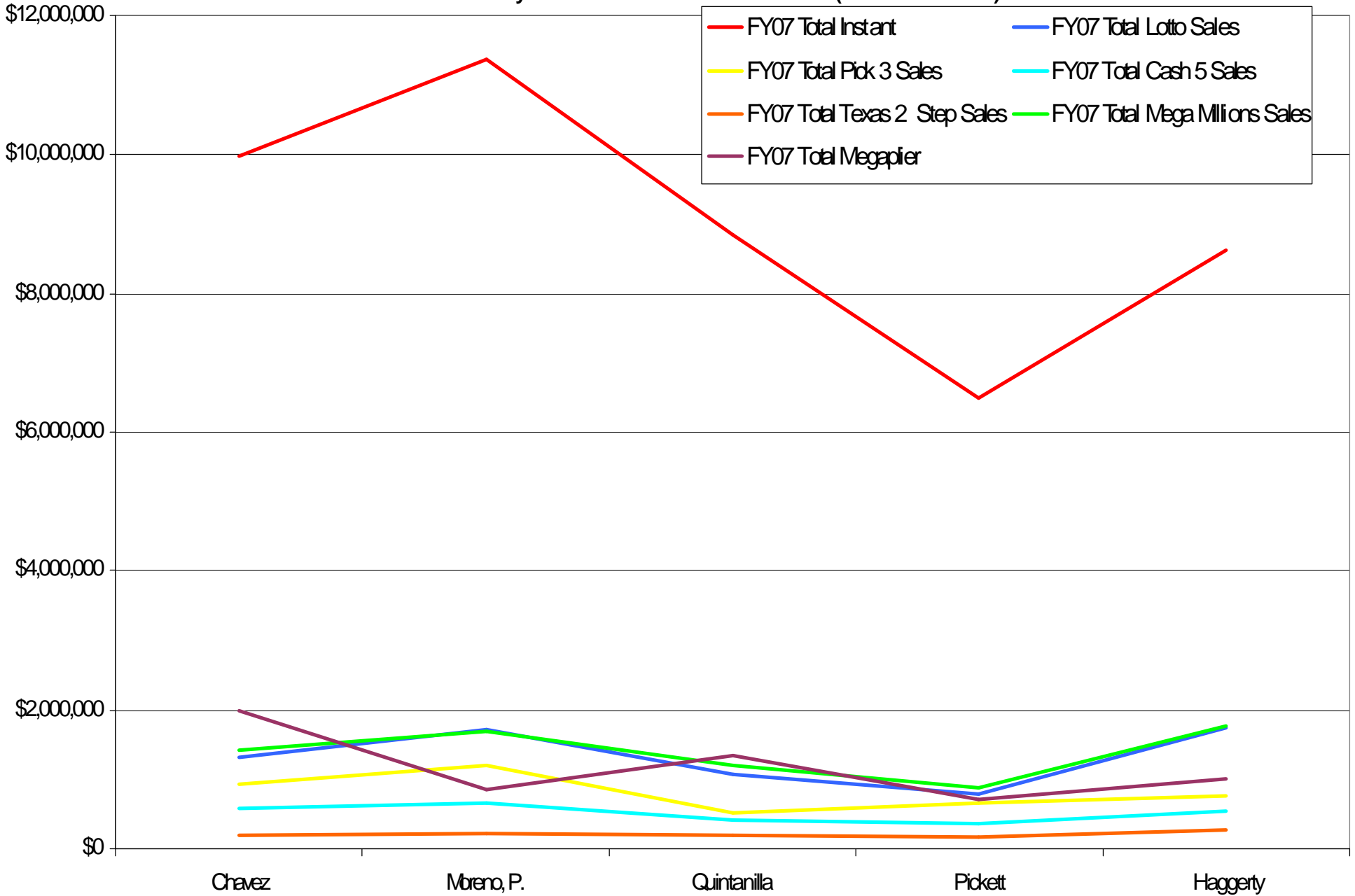
Source: Texas Lottery Commission FY07 Sales & Retailer Data (Actual Retailer Sales)



# FY07 Texas Lottery Sales by Product

El Paso Legislative House District

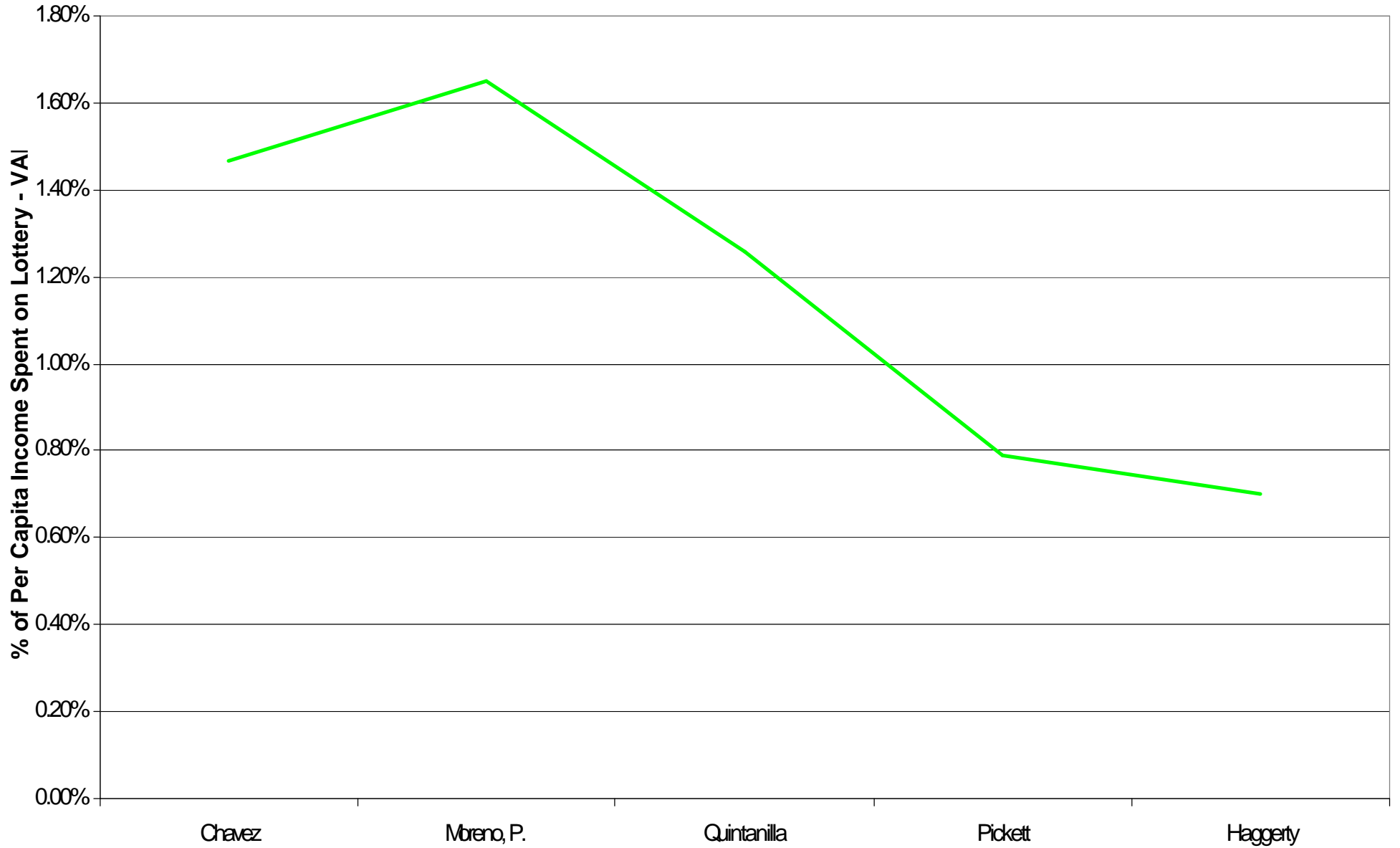
Source: Texas Lottery Commission FY07 Sales & Retailer Data (Actual Retailer Sales)



# Percentage of Per Capita Income Spent on Lottery- Voting Age Population

## El Paso Area Legislative House Districts

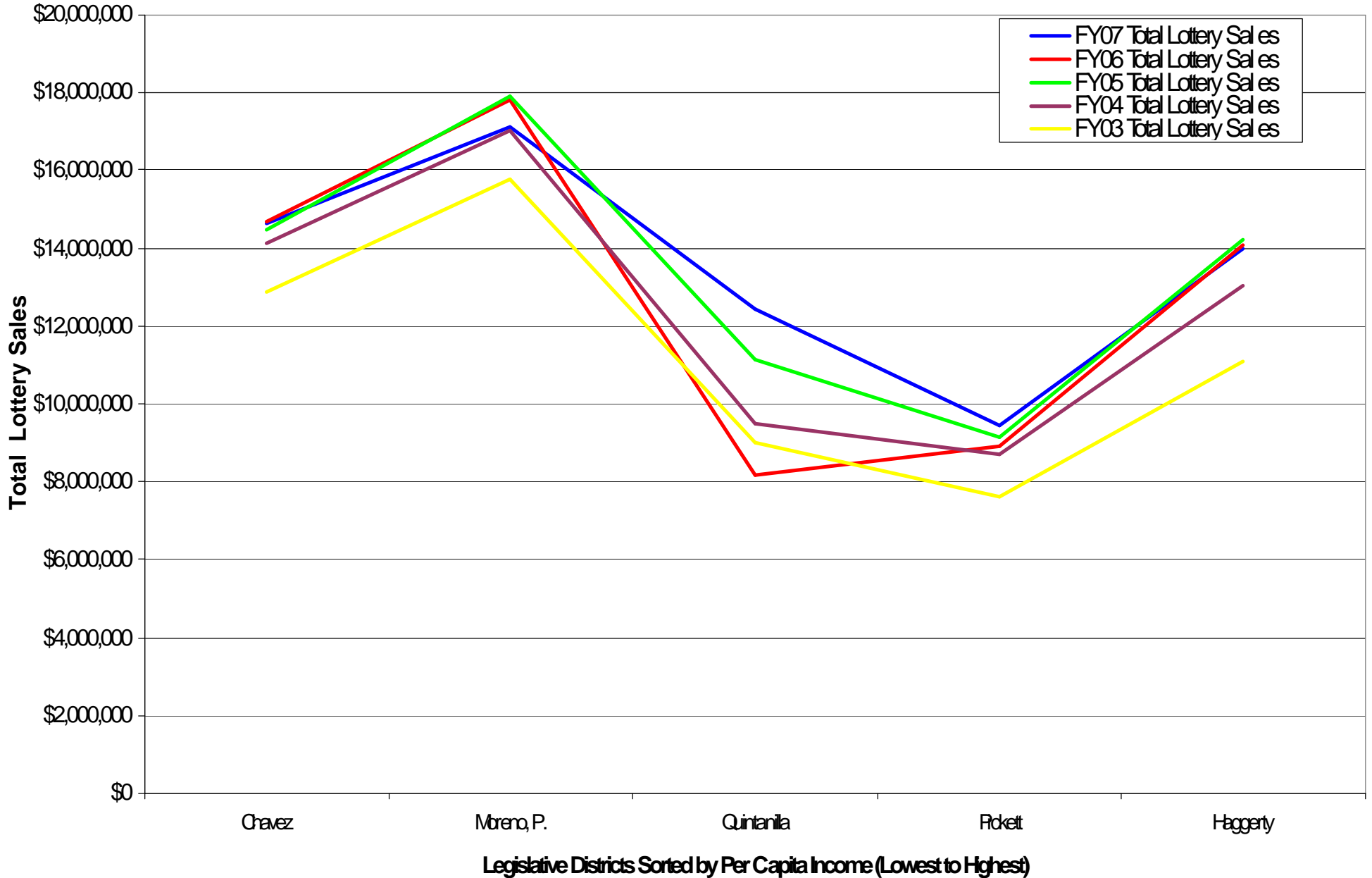
Source: Texas Lottery Commission FY07 Sales & Retailer Data & U.S. Bureau of the Census, 2000



# FY03, FY04, FY05, FY06 & FY07 Texas Lottery Sales

## El Paso Area Legislative House Districts

Source: Texas Lottery Commission Sales & Retailer Data (Actual Retailer Sales)



# FY03- FY07 Percentage of Per Capita Income Spent on Lottery

## El Paso Area Legislative House Districts

Source: Texas Lottery Commission Sales and Retailer Data & U.S. Bureau of the Census, 2000

